



# MOX-2 Polyclonal Antibody

<b>Catalog No</b>	YP-Ab-15778
<b>Isotype</b>	IgG
<b>Reactivity</b>	Human;Mouse;Rat
<b>Applications</b>	WB;IHC;IF;ELISA
<b>Gene Name</b>	MEOX2
<b>Protein Name</b>	Homeobox protein MOX-2
<b>Immunogen</b>	The antiserum was produced against synthesized peptide derived from human MEOX2. AA range:151-200
<b>Specificity</b>	MOX-2 Polyclonal Antibody detects endogenous levels of MOX-2 protein.
<b>Formulation</b>	Liquid in PBS containing 50% glycerol, 0.5% BSA and 0.02% sodium azide.
<b>Source</b>	Polyclonal, Rabbit,IgG
<b>Purification</b>	The antibody was affinity-purified from rabbit antiserum by affinity-chromatography using epitope-specific immunogen.
<b>Dilution</b>	WB: 1/500 - 1/2000. IHC: 1/100 - 1/300. ELISA: 1/10000.. IF 1:50-200
<b>Concentration</b>	1 mg/ml
<b>Purity</b>	≥90%
<b>Storage Stability</b>	-20°C/1 year
<b>Synonyms</b>	MEOX2; GAX; MOX2; Homeobox protein MOX-2; Growth arrest-specific homeobox; Mesenchyme homeobox 2
<b>Observed Band</b>	33kD
<b>Cell Pathway</b>	Nucleus . Nucleus speckle .
<b>Tissue Specificity</b>	Embryo,Heart,Skin,
<b>Function</b>	function:Role in mesoderm induction and its earliest regional specification, somitogenesis, and myogenic and sclerotomal differentiation. May have a regulatory role when quiescent vascular smooth muscle cells reenter the cell cycle.,polymorphism:The poly-His region of MEOX2 is polymorphic and the number of His varies in the population.,similarity:Contains 1 homeobox DNA-binding domain.,subunit:Interacts with RNF10.,tissue specificity:Embryo and placenta.,
<b>Background</b>	This gene encodes a member of a subfamily of non-clustered, diverged, antennapedia-like homeobox-containing genes. The encoded protein may play a role in the regulation of vertebrate limb myogenesis. Mutations in the related mouse protein may be associated with craniofacial and/or skeletal abnormalities, in addition to neurovascular dysfunction observed in Alzheimer's disease. [provided by RefSeq, Jul 2008],



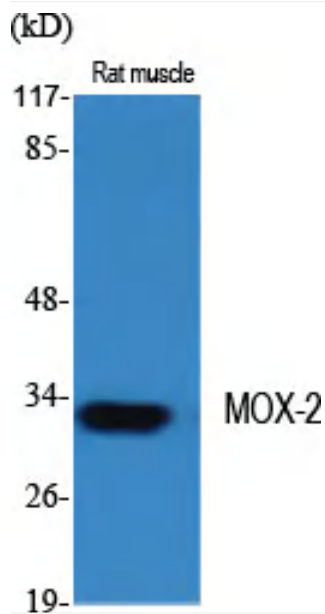
matters needing attention

Avoid repeated freezing and thawing!

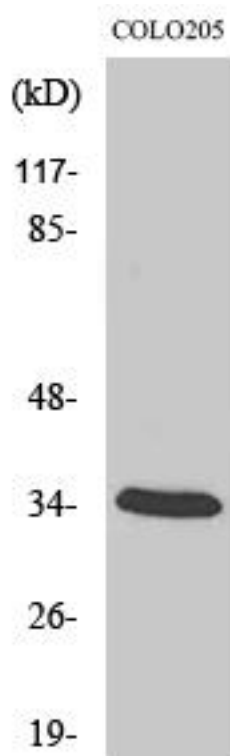
Usage suggestions

This product can be used in immunological reaction related experiments. For more information, please consult technical personnel.

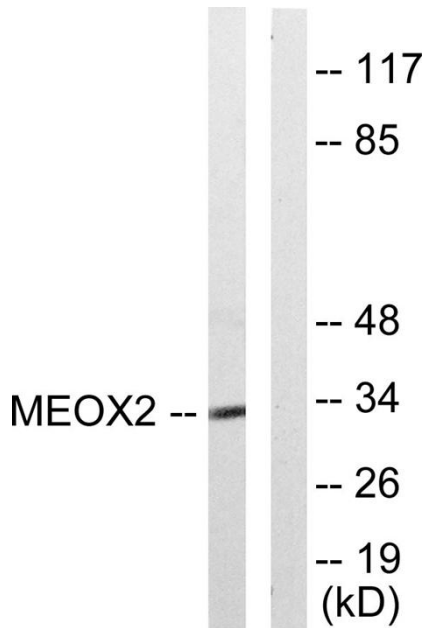
## Products Images



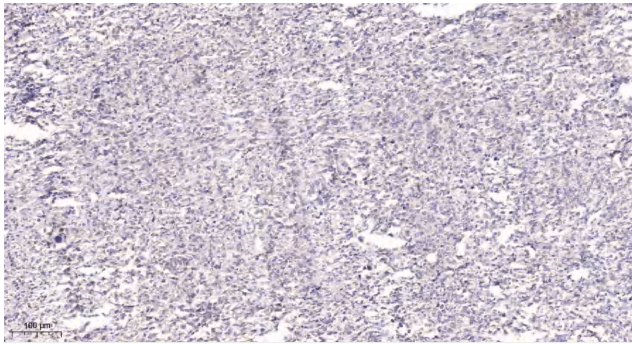
Western Blot analysis of various cells using MOX-2 Polyclonal Antibody diluted at 1:2000



Western Blot analysis of COLO205 cells using MOX-2 Polyclonal Antibody diluted at 1:2000



Western blot analysis of lysates from COLO205 cells, using MEOX2 Antibody. The lane on the right is blocked with the synthesized peptide.



Immunohistochemical analysis of paraffin-embedded human Small intestinal stromal tumor. 1, Tris-EDTA, pH9.0 was used for antigen retrieval. 2 Antibody was diluted at 1:200(4° overnight). 3, Secondary antibody was diluted at 1:200(room temperature, 45min).